

Miniature ATS HS Types

2P

100A

200A



Features

Saving power

It is in an instantaneous excitation mode with low operating current (1.6A in case of AC 220V operation)

Safe Design

The breaking part is molded for a dust-proof so the operational cycle of the contact part is semi-permanent.

2-Coil Mode

It adopted a simple operation mode using 2 coils

Miniature

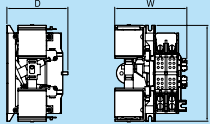
It can be built inside the portable generator or UPS

Low Cost

It is a miniature type and it is optimal for a single phase with less than 200A (non-inductive)

Applied Standard

IEC 60947-6-1 / UL1008

Type			21HS	22HS
Rated Current(In)	A		100	200
Rated Voltage(Ue)	V		AC220	AC220
Rated Insulation Voltage(Ui)	V		AC300	AC300
Rated Impulse Voltage(Uimp)	kV		4	4
Poles	P		2	2
Throw	T		Double Throw	Double Throw
Connection Type	Front		●	●
	Back		-	-
Performance				
Short Time Current(1s) Icw	kA		5	10
Short Circuit Peak Current Icm	kA		5	10
With Specific Circuit Breaker	kA		14	25
Fuse Mounting	kA		200	200
Switch Capacityapacity ^{Note1)}	Class		AC-33B	AC-33B
Endurance	Electrical	Cycles	5,000	5,000
	Mechanical	Cycles	10,000	10,000
Transfer Sequence			A ↔ B	A ↔ B
Operation Time	Opening	msec	≤30	≤30
	Switching	msec	≤60	≤60
Conditions of Uninterruptible Transfer				
Switching	AC/DC 110V	A	-	-
	AC 220V	A	5	8
Dimensions & Weights				
	H		165	176
	W		127	151
	D		100	121
Weight	kg		1.1	2.2
Precautions			1) Transfer time is 0.3sec or less. Make sure a full operation is possible with an operation command of 0.5sec or more. 2) When A-side and B-side operation command is done simultaneously, it may lead to coil burning. 3) In case of an operation relay, select a sufficient contact capacity that exceeds the operating current.	

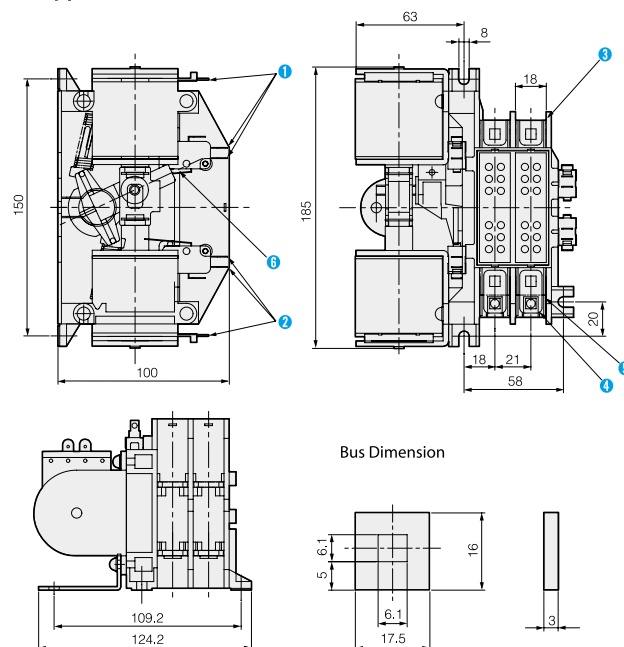
* **Note1)** Switching Capacity : AC-33B :

Overcurrent Switching Performance (Closing $10 \times I_e$, Breaking $10 \times I_e$, $\cos\phi = 0.35$),
 Rated Load Switching Performance (Closing $1 \times I_e$, Breaking $1 \times I_e$, $\cos\phi = 0.8$)

External Sizes

Low Voltage Automatic Transfer Switch ATS, CTTS

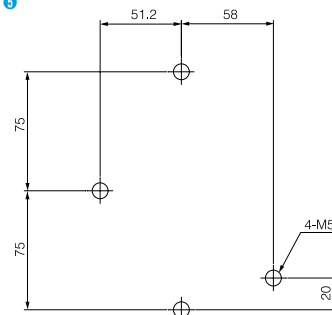
HS Type 21HS



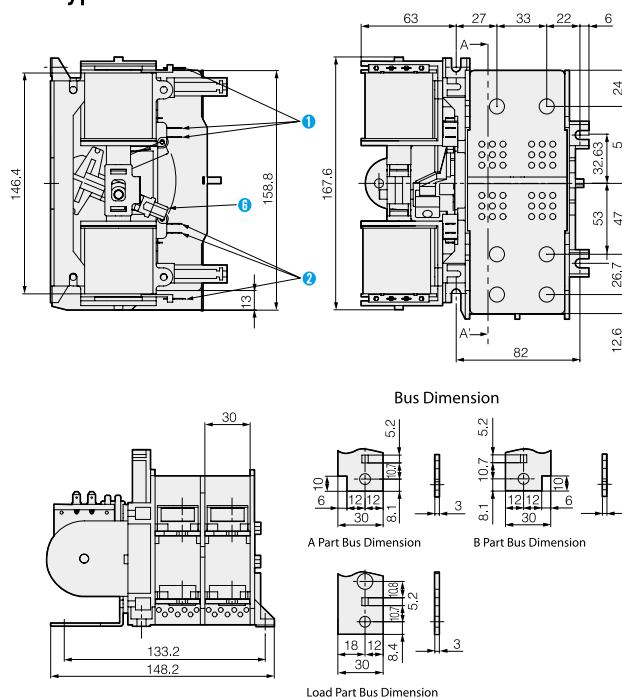
Part Names

- ① A Operating circuit terminal
- ② B Operating circuit terminal
- ③ A power source side main circuit terminal
- ④ Loading side main circuit terminal
- ⑤ B power source side main circuit terminal
- ⑥ Manual operating lever

Panel Processing Dimension (Front)/100A 2P

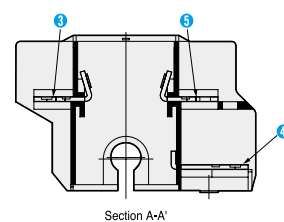


HS Type 22HS



Part Names

- ① A Operating circuit terminal
- ② B Operating circuit terminal
- ③ A power source side main circuit terminal
- ④ Loading side main circuit terminal
- ⑤ B power source side main circuit terminal
- ⑥ Manual operating lever



Panel Processing Dimension (Front)/200A 2P

